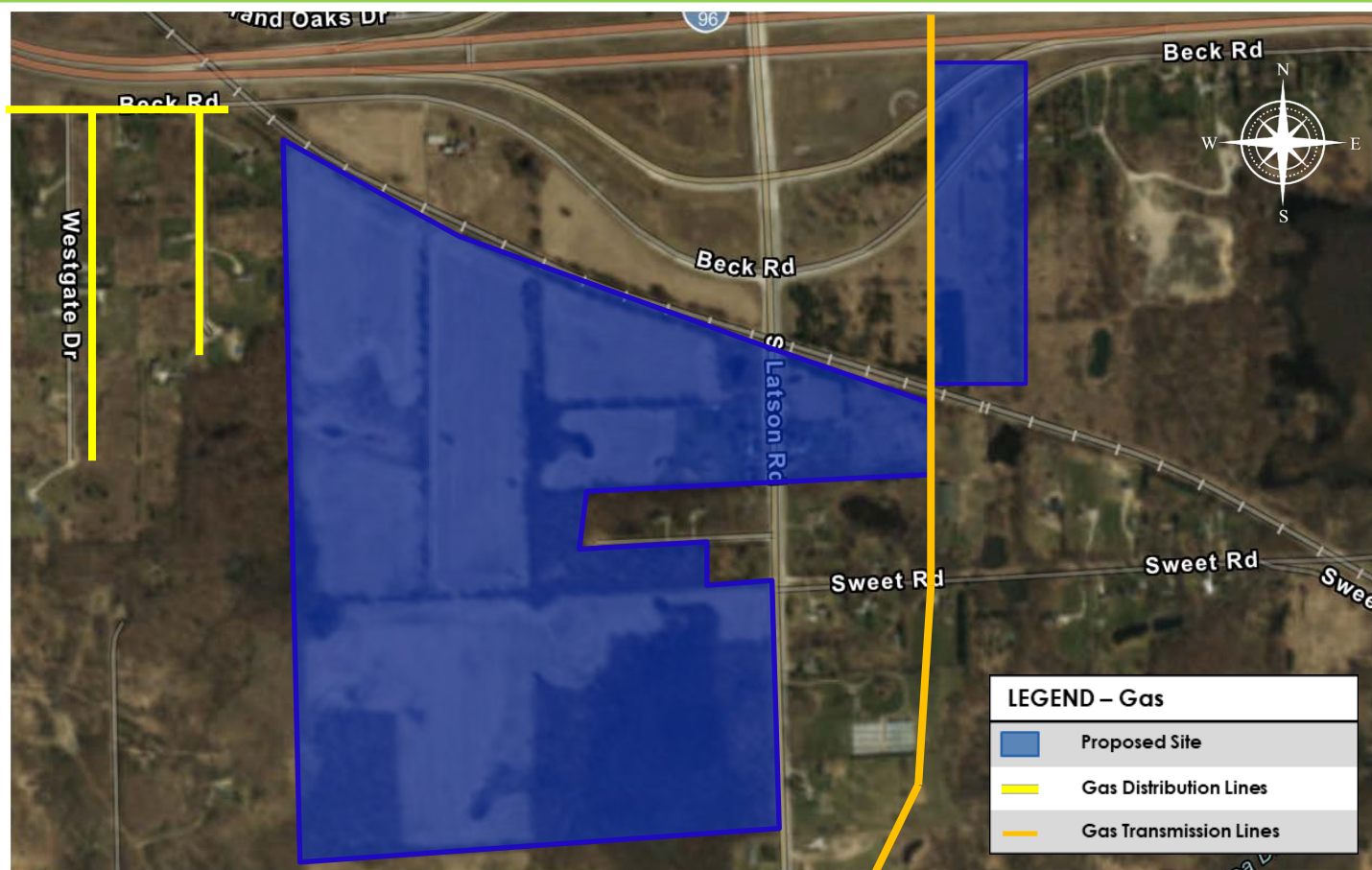


Livingston County/Howell 1882 S. Latson Rd.



All existing facility locations are approximate and are not to be used for construction purposes.
Always contact MISS DIG 811 before you dig.

Natural Gas Site Benefits

- **Distribution System**
 - Multiple medium-capacity gas mains currently available along Beck Rd and Crooked Lake Rd.
 - Up to 20 psig delivery pressures readily available, depending upon customer load requirements.
- **Transmission System**
 - 36-inch high-capacity gas main currently available Latson Road.

For additional information

Lisa Pung, Economic Development Program Manager | 517-374-2151 |
lisa.pung@cmsenergy.com